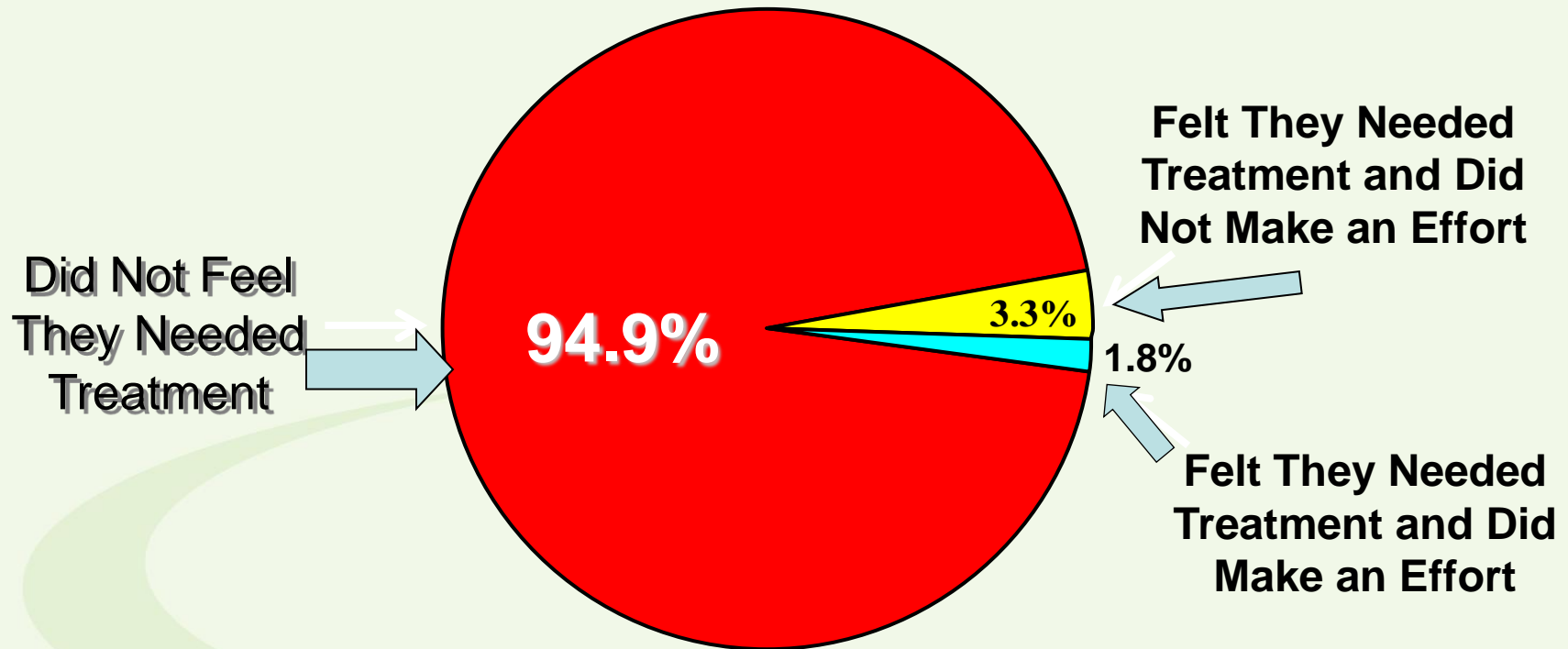




Boston EMA Planning Council  
October 8, 2009

# Most People in Need of Treatment Do Not Seek It



Reason for Not Making an Effort: Not ready; No health coverage/can't afford it; impact on job; negative opinion by community; handle on their own

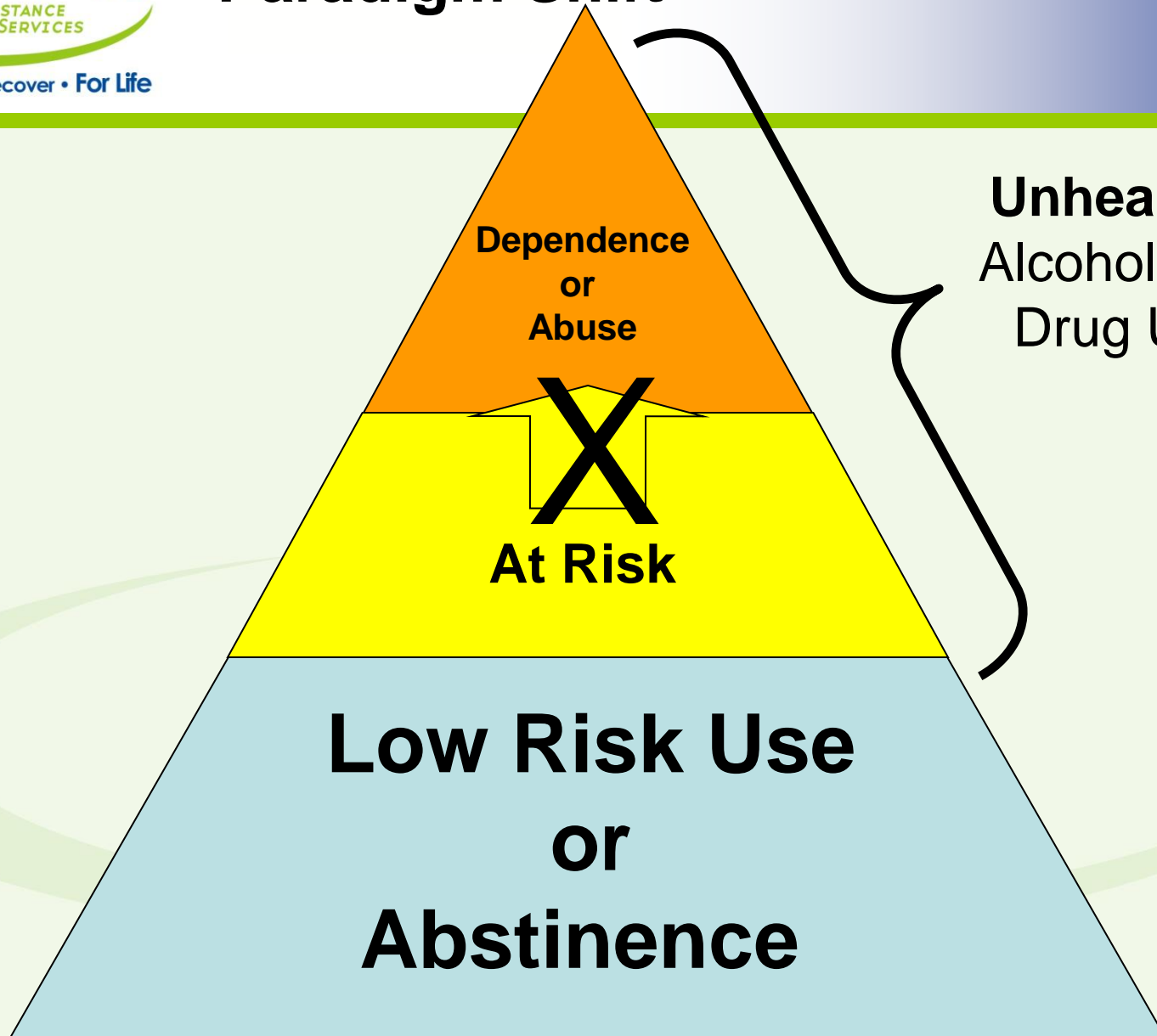
# Old Model of SUDs



**Disease**

**No Disease**

# Paradigm Shift



# FY11 Bureau of Substance Abuse Services Funding



## Total State and Federal Funding by Fiscal Year:

<b>FY07</b>	<b>\$131,902,250</b>	(includes supp of \$20M)
<b>FY08</b>	<b>\$127,966,014</b>	
<b>FY09</b>	<b>\$128,357,141</b>	
<b>FY10</b>	<b>\$129,687,807</b>	
<b>FY11</b>	<b>\$74,515,802</b>	State appropriation (4512-0200)
	<b>\$ 34,451,972</b>	Federal Block Grant (4512-9069)
	<b>\$ 4,800,000</b>	Post-Detox Step Down (4512-0201)
	<b>\$ 2,000,000</b>	Jail Diversion Program (4512-0202)
	<b>\$ 1,500,000</b>	Family Intervention Services (4512-0203)
	<b><u>\$11,584,098</u></b>	Other State and Federal funds (various accts.)
	<b>\$128,851,872</b>	<b>Total Funding</b>

# Total FY11 EMA Funding for Substance Abuse Treatment



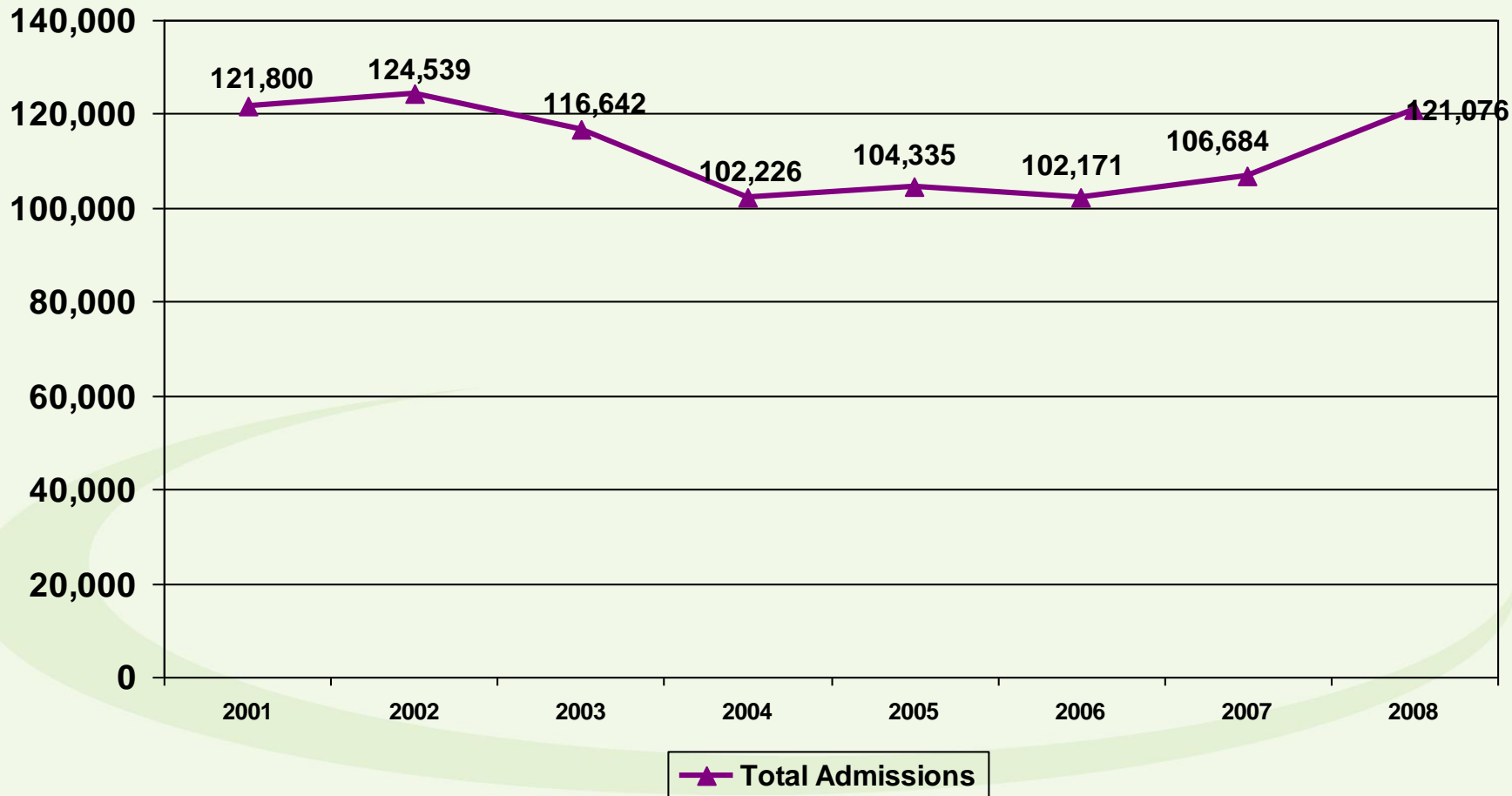
<b>Total EMA Funding for Substance Abuse Treatment</b>	<b>Funding for Ryan White Related Services in EMA</b> <i>(estimate)</i>
FY11 - \$94,301,227 SAMHSA: \$ 22,983,217 State: \$61,519,254 Other state and federal: \$9,798,755	\$65,067,847
FY10 - \$96,702,575	\$66,655,572
FY09 - \$98,353,206	\$67,863,712
FY08 - \$93,274,981	\$64,359,737
FY07 - \$92,457,709	\$63,795,819

# BSAS Priority Populations



BSAS requires providers to prioritize IDUs, HIV+ and those at highest risk, women, homeless and racial and ethnic minorities for admission to services. BSAS is the payer of last resort for clients with no other resources or where there is no other payer.

# Total Adult BSAS Admissions





Prevent • Treat • Recover • For Life

# BSAS Services



## Prevention Services:

Regional Centers for Health Communities (RCHC's)  
Community-based Prevention Programs  
Educational material  
Media Campaigns

## Screening and Early Intervention Services

Community Health Center Screening, Intervention and Referral to Treatment Services (SBIRT)  
Federal SBIRT Grant  
Emergency Department SBIRT

## Acute Treatment Services

Acute Treatment Services (Detoxification)  
Clinical Support Services (Level 3.5)  
Section 35 for Men and Women

## Short Term Stabilization Services for Adults

Transitional Support Services  
Tewksbury Stabilization Program

## Youth Intervention and Treatment Services

Early Intervention (CASASStart)  
Youth Stabilization  
Youth Residential  
Recovery High Schools  
Youth Outpatient Services

## Adult Residential Treatment

Recovery Homes  
Therapeutic Communities  
Social Model Recovery Homes  
Specialized Residential Services for Women

## Family Services

Outreach for Homeless families  
Family Residential Treatment Programs  
Supportive Housing Services For Homeless Families

## Outpatient Services:

Outpatient Counseling  
Opioid Treatment Services  
Day Treatment/Enhanced Day Treatment/Intensive Outpatient  
Acupuncture Services  
Compulsive Gambling Treatment  
Office-based Opioid Treatment (OBOT)

## Housing and Homeless Services:

Substance Abuse Shelters for Individuals  
Post Detox Pre-Recovery Programs (PDRP)  
Supportive Case Management in Housing  
Community-Based Case Management  
Outreach to Homeless Youth and Adults

## Recovery Support Services

Recovery Engagement Centers  
Consumer Education

## Criminal Justice Programs

Services in County Houses of Correction  
Court Diversion Programs  
First Offender Driver Alcohol Education (DAE)  
Second Offender 14-Day Residential Program for Driving Under the Influence of Liquor (DUIL)  
Second Offender Aftercare (SOA)

## Training, Technical Assistance and Support Services

Substance Abuse Information and Referral Helpline  
Problem Gambling Information and Referral Helpline  
Tobacco Training and Technical Assistance  
Women's Services Capacity Building  
HIV/HEP C Training and technical Assistance

# Characteristics of Treatment Admissions



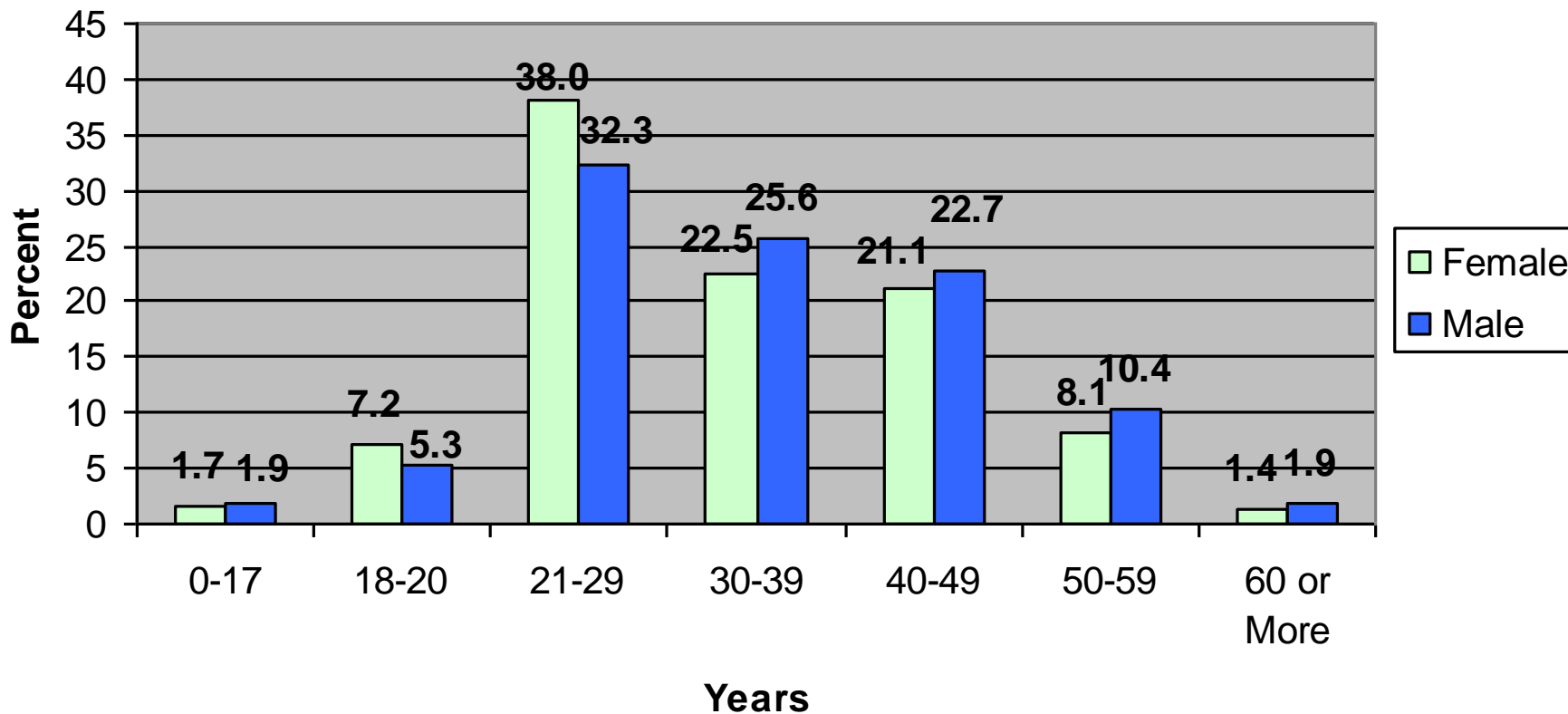
- 70.2% male, 39.7% female
- 77.4% reported being white, non-Hispanic, 8% Black, non-Hispanic, 11.5% Latino/Hispanic and 3.1% other, non-Hispanic
- Proportion of all admissions who are 18-25 years old increased from 16.9% in FY00 to 24.9% in FY10
- Past year heroin use constituted the 2<sup>nd</sup> largest proportion of all adult admissions (43.8%)
- 39.2% reported injection drug use
- 17.3% of clients were homeless at the time of admission.
- 76% of adult admissions were unemployed at the time of admission, a decrease from 74.2% in FY04
- 24% of all admissions were referrals from criminal justice

(FY2010 EIM/ESM data)

# Characteristics of Treatment Admissions



Gender within Age Categories (FY2010 Admissions)

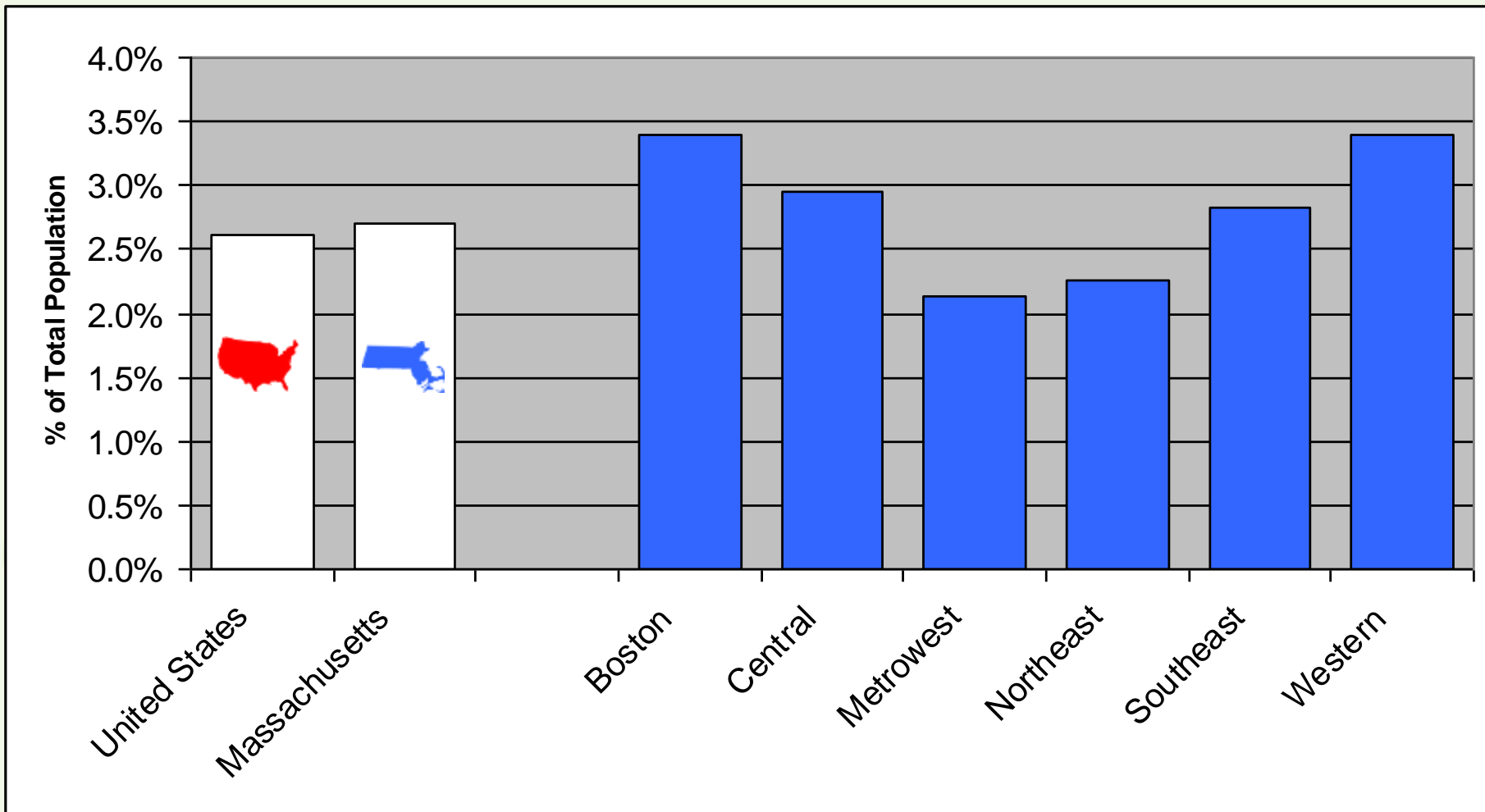


# Admissions Ranking

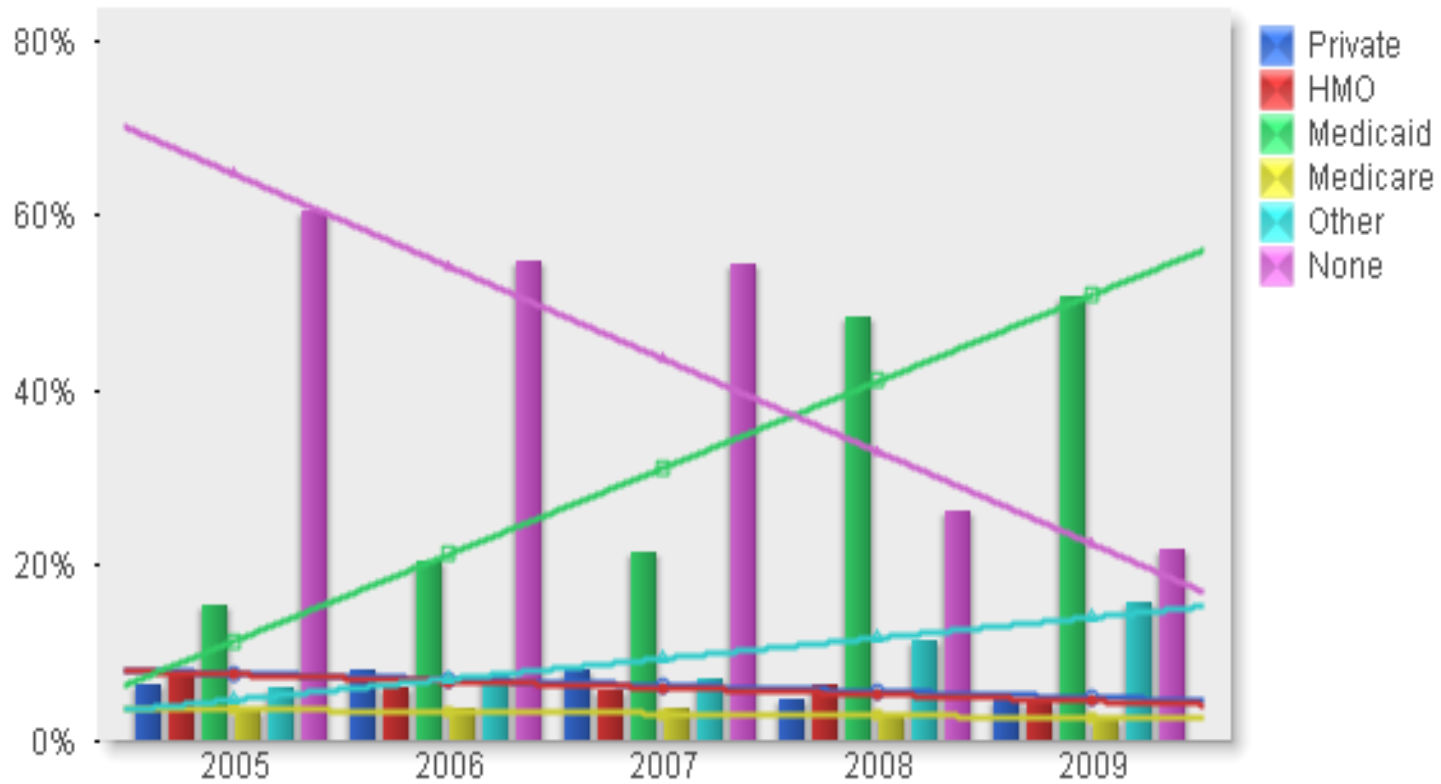


	Position	State Value	Similar States
State Population	15 <sup>th</sup>	6,497,967	Indiana (6,376,792) Arizona (6,500,180)
No. of Clients Served by Treatment Programs	5 <sup>th</sup>	77,873	Washington (70,909) New York (80,451)

# Unmet Need For Treatment Seekers



# Insurance Status of Clients Entering Detox



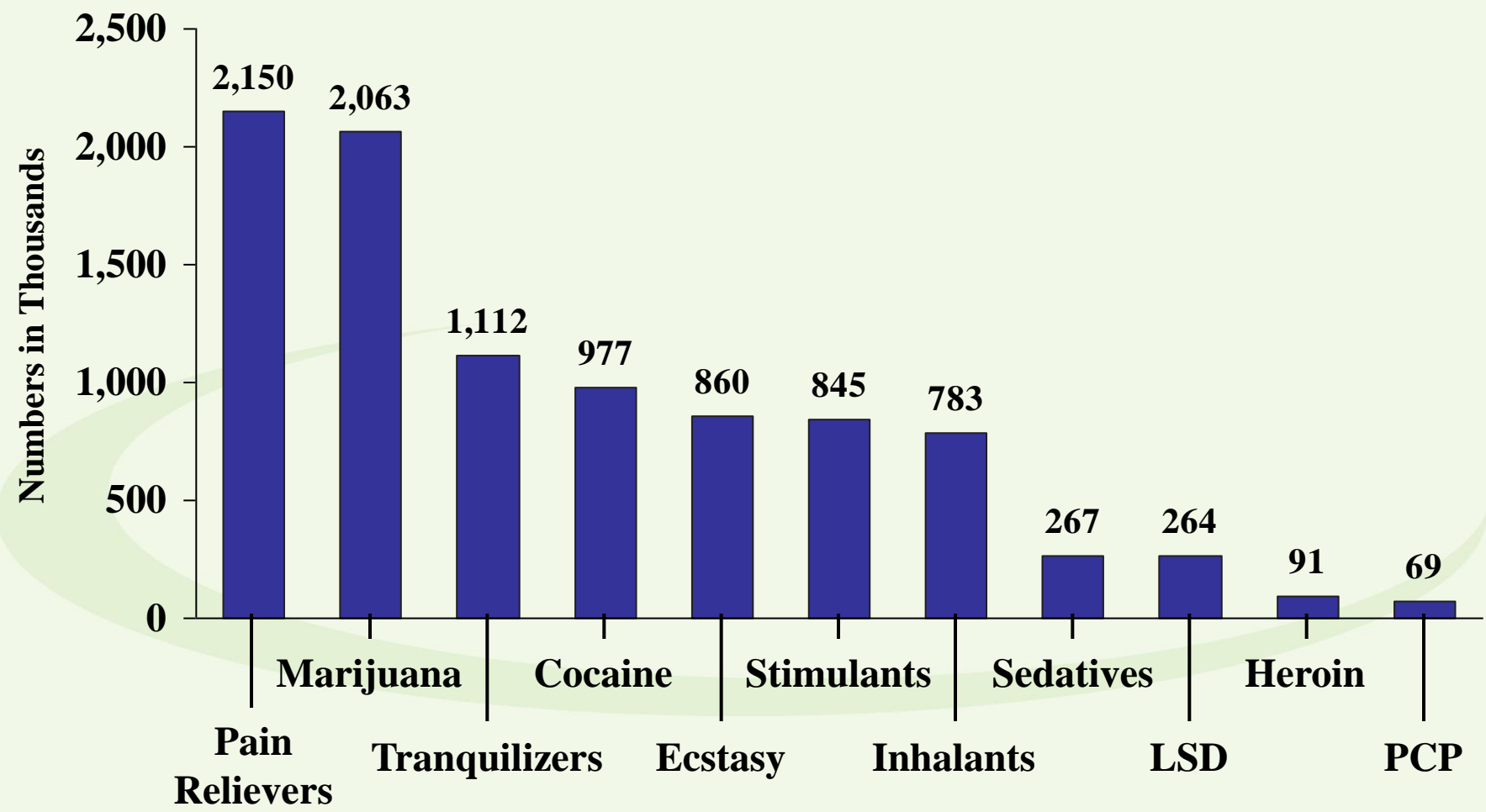
# Observations

- Significant uninsureds still presenting for tx – primarily young adult men
- Premiums, co-pays/deductibles may be a barrier – Appeal to Connector to drop co-pays for detox denied
- Considerable churning/dis-enrollment among plans
- **No major cost shifting, except OP**
- Varying administrative capacity to handle claims among providers – Burdensome and costly
- **Significant changes in authorization, utilization review and lengths of stay**

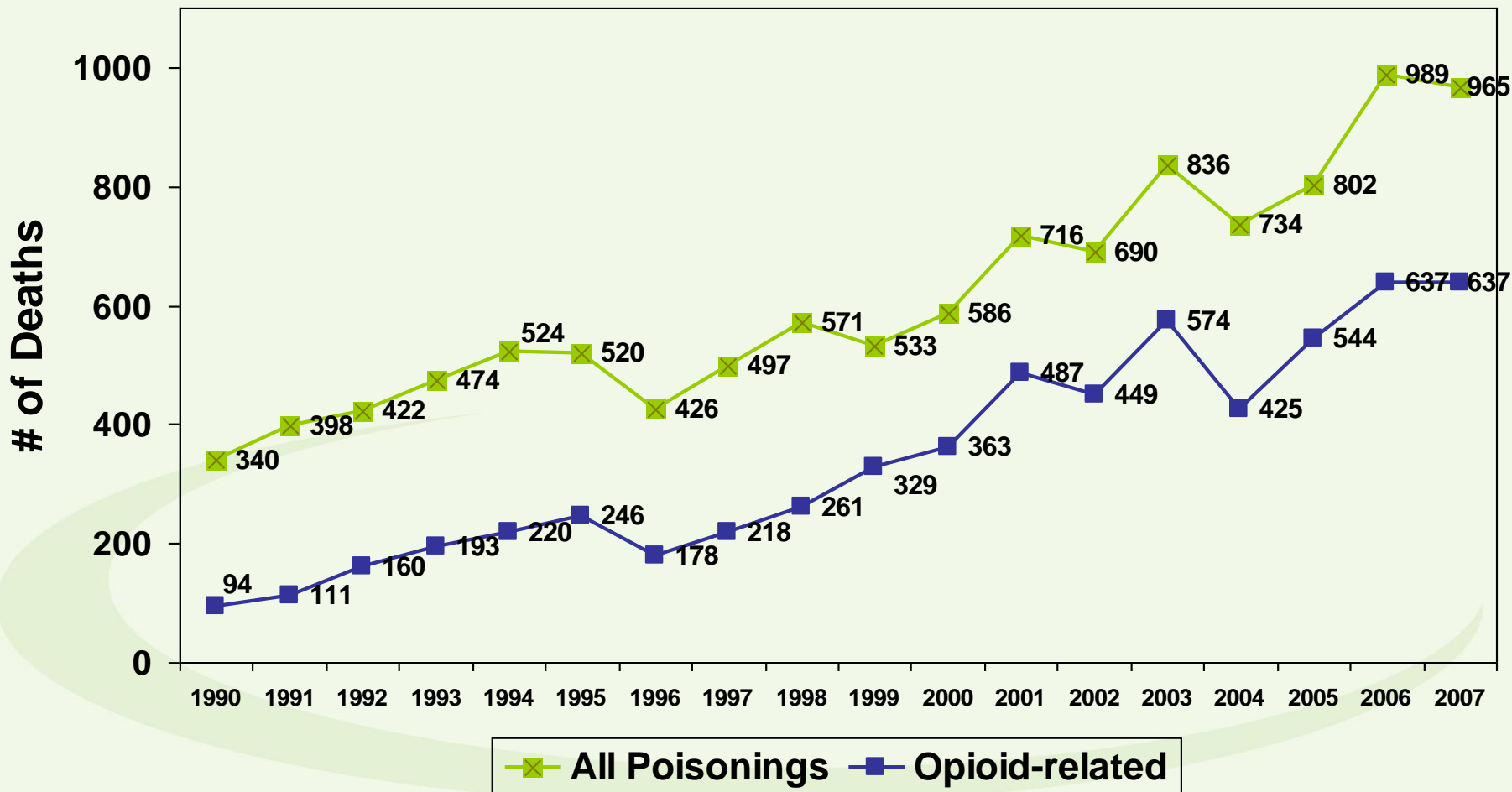
Fig 5.1



# Past Year Initiates for Specific Illicit Drugs among Persons Aged 12 or Older: 2006



# Opioid-Related vs. All Poisoning Deaths 1990-2007

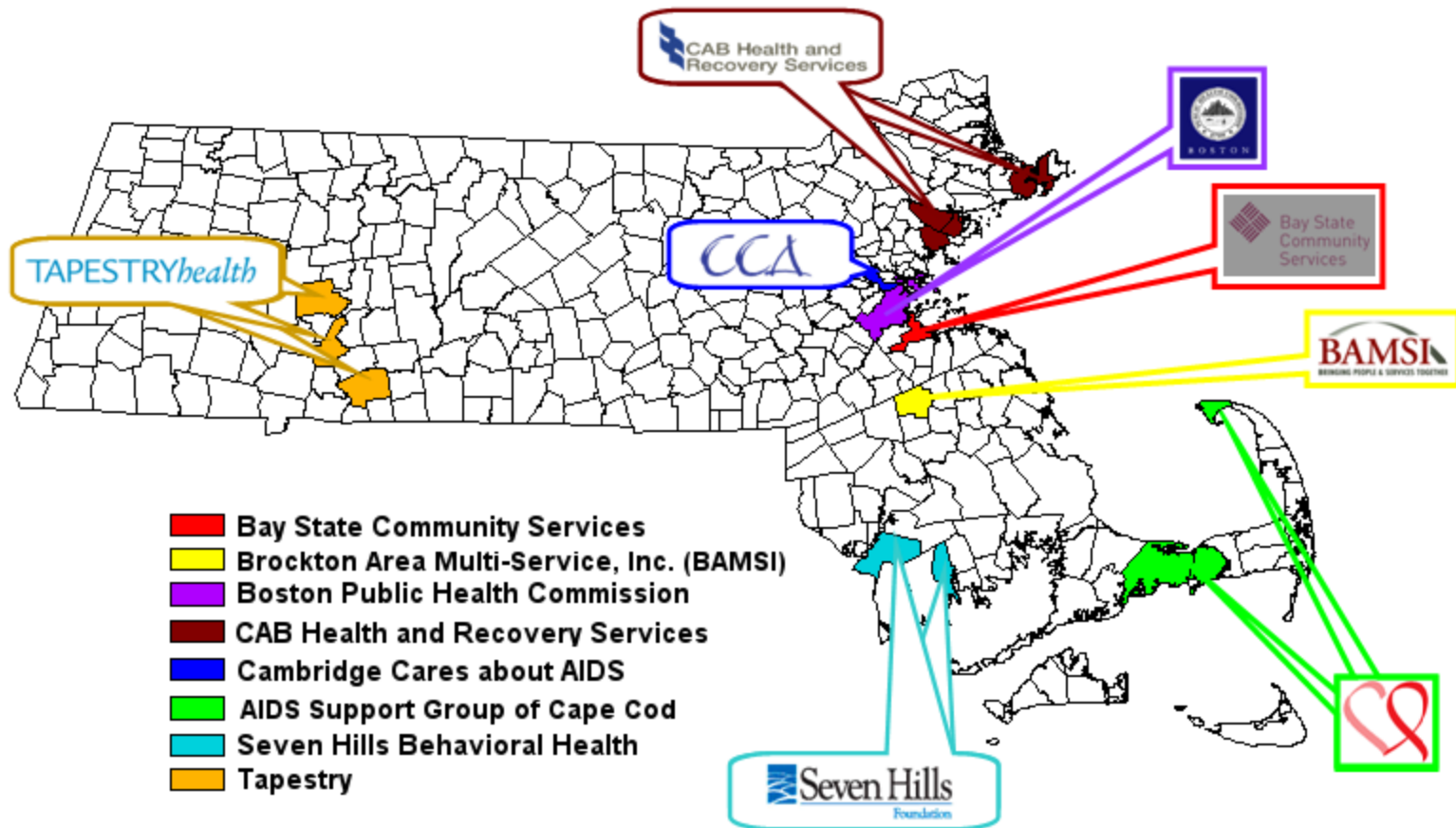


Source: Registry of Vital Records and Statistics, MA Department of Public Health

# Who is Overdosing? Demographics

- Fatal overdose (n=637) rates per 100,000 were highest among:
  - White non Hispanic (10.6, n = 550)
  - Hispanic (9.8, n = 50)
  - Black non Hispanic (8.8, n = 35)
- Age and sex specific rates for overdose are the highest among males and females age 40-49
- Sex specific rates for overdose among males is 2.4 times higher than for females

# Massachusetts Naloxone Distribution Pilot Sites



# Preliminary Findings – January 2008 – July 2010



7,300 enrollees

-2/3 active users

-1/3 family, friends, providers

Over **700** reported reversals!

# FY11 Initiatives

- Jail Diversion Program(s)
- Family Intervention Services – RFR out now
- Overdose Prevention
- 911 Good Samaritan Legislation
- Workforce Development
- Access to Recovery (ATR) – new federal grant
- Integration with Primary Care



## Areas of Focus

- Maximize Interagency Collaboration
- Address Disparities
- Community-based Prevention
- Recovery-oriented system of care
- Enhance Workforce and Organizations
- Collaboration/Integration with Criminal Justice System

# Areas of Opportunity

- Expansion of Narcan/OD prevention programs
- Screening and Intervention Services across HIV service providers
- Tobacco Cessation
- Social Marketing Campaign focused on norm changes in LGBT communities
- Data Linkage

# Unknowns

- Impact of alcohol tax repeal
- FY12 funding
- Changes to the Block Grant